

VIGNOBLES & COMPAGNIE
engagés depuis 1963

COLLECTION
2024

EXPORT



Rhône Valley
BOLDNESS



VIGNOBLES & COMPAGNIE
engagés depuis 1963

V&CO IS ALWAYS HERE FOR YOU !



MAIN DATES

1963: Creation of the Winery,
by grape growers.

1969: The Merlaut family
acquisition (Taillan Group).

1990: First partnerships with
Domaines & Châteaux.

2017: V&CO becomes a
winegrower at Château des
Sources.

2023: CSR Certification

A wine story

60 years of wine experience



RHONE VALLEY

VIGNOBLES & COMPAGNIE
engagés depuis 1963

VIGNOBLES & COMPAGNIE CERTIFICATIONS

- IFS
- BRC
- ORGANIC WINES - NOP
- CSR (Corporate Social Responsibility)

OUR MISSION

We believe in the values of **COMMITMENT, SOLIDARITY** and **SHARING**.
We support a **SUSTAINABLE AGRICULTURE**.

STRATEGIC FOCUS

Creating value for us and the sector

Economic performance / Food safety guaranteeing / Innovation / Increasing brand awareness and brand image / Respect of fair practices

Promoting human capital

Improving life quality at work / Human resource development /
Developing partnerships with local players

Improving our internal organisation

Optimizing our processes and offer / Developing internal communication / Optimizing information system tools /
Improving forecasting

Supporting our environmental project

Developing our organic and biodynamic offer in wines / Extending the eco-design and circular economy /
Increase biodiversity / Promoting sustainable agriculture

OUR KNOW-HOW

VIN DE FRANCE



IGP
PAYS D'OC



RHÔNE VALLEY



Our product range

For each range, one identity : the **terroirs**: our flagship brands, the **domaines et châteaux**: our partners, the **inattendus**: our fun and off-the-wall brands

Les terroirs

CHATEAUNEUF-DU-PAPE
P8



GIGONDAS
P9



VACQUEYRAS
P10



TAVEL
P11



SAINT JOSEPH
P12



LES COMBELLES
P13



NOS ORIGINES
P14-15



PURE EVIDENCE
P16



LES PETITES SOURCES
P17



OUR SPECIAL CUVÉES

CÔTES DU RHÔNE
P18



HENRI D'AUTIGNAC
P19



Les Domaines et châteaux

CRUS
P20-26



CDR VILLAGES
P27



CÔTES DU RHÔNE
P28



DU CHE D'UZES
P29



COSTIÈRES DE NÎMES
P30-31



Les inattendus

LE PETIT COCHONNET
P32-35



PETIT TRACTEUR
P36-37



VOITURETTE
P38-39



LES GRANGES DES PAPES

The barns were built during the sixteenth century throughout the southern Rhone Valley to shelter the food of the popes. Located in the heart of a famous pebble terroir, the vines of this Châteauneuf-du-Pape give birth to an exceptional wine.



- Organic wine
- A brand that reflects the history of the appellation and the region
- 5% of the appellation's production is white
- White: 15% of the blend is aged in barrels
- Annually awarded
- **Red:** Velvety and balanced. Medium- to full-bodied with sinewy tannins. Round and flavorful in the finish. (James Suckling)
- **White:** Round and balanced expression, fresh palate, great length. (Wine Enthusiast)

WHITE

2021



RED

2020



2020



2021



Les Sources de Gigondas

The medieval village of Gigondas is known for its springs, symbol of purity and renewal. The virtue of its particularly renowned healing waters made it a very fashionable spa resort in the 19th century.

- Brand name and illustration reflecting the history of the appellation
- Unusual label format (small format)
- **Characteristics:** Fruity, delicate and soft mouthfeel. (Wine Enthusiast)



2020		2021	
			



Les Roches des Dentelles

Thanks to an amazing location just above the rocky mountains of the Dentelles de Montmirail, the certified organic vines benefit from ideal weather conditions to ripen perfectly. Indeed, Vacqueyras has a Mediterranean windy climate.



- Organic wine
- 30% of the vineyard is organic
- 5% of the vineyard is Vacqueyras white
- A highly sought after and recognized mineral white
- **Red:** Rich palate with fine, persistent tannins (Wine Enthusiast)
- **White:** Freshness and finesse, fruit sensation, salty expressing the terroir's minerality



	RED	
2019	2020	2020
15/20	90	90

ESPRIT DES VESTIGES *Reserve des Chastelles*

Roman civilization has left its mark in TAVEL. Amphora remnants, grape seeds and press sediments have been found in the area proving that wine was already made there 2,000 years ago.

• ESPRIT DES VESTIGES :

- Organic wine
- Gastronomic rosé wine
- Modern profile with light colour
- More modern label



- **Characteristics:** Delicate, easy to drink and silky mouth (Guide Hachette)

• RESERVE DES CHASTELLES:

- Gastronomic rosé wine
- Traditional design in line with the appellation standard
- **Characteristics:** Medium-bodied with a light tannic edge (James Suckling)



ESPRIT DES VESTIGES
2022



RESERVE DES CHASTELLES
2021





Rive de Malva, cuvee dedicated to the Saint Joseph appellation takes its name from the middle aged production area, "Vin des mauves" (malva in latin).

- Wine from our long term partner
- Northern cru Rhône
- A brand that reflects the history of the appellation (Vin de Mauves)
- Modern design (luce ritrama paper shows the colour of the wine)
- The map shows the Saint Joseph appellation area
- **Characteristics:** Medium to full-bodied with plush tannins. Creamy texture with a fresh acidity bringing vitality to the finish. (James Suckling)



LES COMBELLES

The « combe » is an excavated valley dominated by steep slopes, special topography of the Rhone Valley. Thus our range Les Combelles reflects the richness of the terroir of this “Beautiful Valley” to offer you vintage after vintage delicious and fruity authentic wines.



Environmentally responsible range :

- HVE 3 wines,
- V&CO eco-designed embossed bottle
(Côtes du Rhône, Côtes du Rhône Villages, Costières de Nîmes)
- Recycled paper



- Wines from our partner Estates
(Côtes du Rhône et Costières de Nîmes)
- Clear distinctive design for an immediate range effect

Tavel: Fresh, Persistent, Wide

Côtes du Rhône Village: Luscious in texture, fruity palate and a soft stone finish (Wine Enthusiast)

Côtes du Rhône:

- **Red:** Discreet length in mouth and well melted tannins with a beautiful finesse. Rich and easy to drink.
- **White:** Fresh and delicate flavour

Costières de Nîmes:

- **Red:** Supple and well-balanced mouth. Long and silky final.
- **Rosé:** Fresh, rich and fruity mouth. Harmonious final.





VIN BIODYNAMIQUE ✨ NOS ORIGINES CÔTES DU RHÔNE

Moon and planetary calendar leads men's work in the vineyard. Some dates have an impact on the soil and plants and it can foster their culture. From the vines to the glass, each step of this cuvee's elaboration is made according to the best date.



- Biodynamic wine
- A wine made in harmony with nature.
- Modern packaging. Natural design in line with the cuvee.
- Eco-designed EDEN paper made from 50% dried grass fibre and 50% cellulose fibre.
- **Characteristics:** Generous and very nice Cotes-du-Rhone. Moderately dry tannin and surprising length. (James Suckling)

2021



VIN BIOLOGIQUE*

NOS ORIGINES

VIN DE FRANCE

In a digitalized world, Vignobles & Compagnie is offering a return to your roots, in what is making the essence of our winemaker profession: terroir, landscape and environment respect.

- Organic wine
- Modern packaging.
- EDEN eco-designed paper made from 50% dried grass fibres and 50% cellulose fibres.
- **Red:** Smooth, Persistent, Silky tannins
- **White:** Tonic, fresh and pleasant wine.



PURE ÉVIDENCE

Wines sourced from our organic partners vineyards. We wish to produce fruity Côtes du Rhône wines. Therefore these wines are vinified into stainless steel vats in order to keep the fruit flavours.



- Organic wine
- The proportion of organic wine in the Rhône Valley is 20%.
- Environmentally responsible packaging (recycled paper, eco-designed embossed bottle), modern and uncluttered.
- **Quality image:** V&CO eco-designed embossed bottle.
- **Red:** Round, intense and rich mouth. Softened tannins. A luscious wine.
- **White:** Fresh, Intense, Rond

RED
2022



Les Petites Sources

Vignobles & Compagnie reveals in these cuvees the emblematic elegance and richness of our french vineyards. We produce plot selection wines from our estate Château des Sources. We offer two cuvees: 100% Viognier and 100% Syrah.

- Sustainable agriculture
- **Red:** Explosion of aromas of ripe red fruits. Roundness. Fine and silky tannins. This medium-bodied wine finishes with oaky notes. (Wine Enthusiast)
- **White:** Powerful and unctuous but balanced by a beautiful freshness.



RED

2022



2022



WHITE

2023





LES LARCINS

During the Middle Ages, wine was a significant source of income. It was a luxury commodity sold to high prices to the nobility and the emerging urban bourgeoisies.

As papal land and trade crossroads, the Rhone valley was prey to feudal banditry. Brigands, mercenary knights and even lords engaged in petty larceny.

Legend has it that those who could not pay saw their barrels pierced to get their wine out

- A wine for all occasions easy to drink
- **Characteristics:** Elegant and harmonious wine. Well-balanced structure. Discreet length in mouth and well melted tannins with a beautiful finesse.



HENRI D'AUTIGNAC

These cuvees Henri D'Autignac are elegant and premium varietal wines with Burgundy style packaging. We have selected the best Chardonnay & Pinot Noir grapes coming from different areas in France.

The wines are oak aged and offer hints of wood flavours.

- Vin de France Premium Burgundy Profile
- **Red:** Firm structure, velvety tannins and delicate texture.
- **White:** Round wine with a floral and mineral explosion. Beautiful length and rich final.





CHATEAU DE LA GRANDE GARDIOLE

Built in the sixteenth century in the centre of the southern part of the Rhône Valley, the role of the castle has evolved continually.

Originally used as a barn to shelter the food of the Prince of Orange, now the property of the Rey family, Château de la Grande Gardiole, has become one of the most influential Estates of the appellation.



- Partner for more than 30 years
- Old grenaches vines more than 50 years
- Warm climate and the famous bed of pebble soil
- Annually rewarded.
- **Characteristics:** A Rich and creamy Chateaneuf du Pape. Full-bodied with fin, firm tannins. Structured and focused with a grainy texture. (James Suckling)

2020



2020



2021



2021



Clos du Bois de Menge

Located in the rare setting of the nearby Dentelles de Montmirail, the vineyards of Clos du Bois de Menge create their nectar from a unique terroir.

Built on the site of a former convent, the wealth of the Clos is a precious heritage perpetuated by many generations.

- Partner for more than 30 years
- **Characteristics:** Medium to full-bodied wine with a nicely balanced, elegant mouthfeel, silky tannins and a great final. (Jeb Dunnuck)



2019



FRANÇOISE REY



DOMAINE DE LA GANSE

Coralie Onde has developed her wine passion thanks to her parents who were wine-growers at Vacqueyras.

"Ganse" in provençal means the headland, which is the end of the vine row that allows to turn and pass from a row to another. Coralie Onde has named her estate like this in memory of her grand-parents who used to tell her "Go to the end of the Ganse!"

- Family estate
- Organic Wine
- Organic farming represent 30% of the vineyard
- **Characteristics:** Rich and full-bodied wine. Nice balance between fruit freshness and spices of liquorice scent which leads to silky tannins.



Domaine LA FONT DE Salignan

The Font de Salignan estate has been a family property for several generations. Its name is a tribute to the fountain, historical monument built in the 17th century.

This fountain was moved from the town of Apt to Cairanne to the request of the father of the Nicolas' family. He wanted the story of the domain to continue in Cairanne. Flavien Nicolas is the actual owner of the estate which has become one of the most important estates of this appellation.

- Manual harvest
- Design of the fountain, symbol of the estate.
- Design that modernizes the old-fashioned image of Cairanne
- **Red:** Aromas of red fruits and spices. Soft and suave tannins.
- **White:** Elegant, balanced and complex final.



FLAVIEN NICOLAS



DOMAINE SAINT ALIMANT



The Vineyards of the Rey family grow on a soil of former Roman settlements.

Sheltered from the Mistral in the region called Alimant, the old Grenache vines (over fifty years old) offer a unique wine that has a great character and is a great delight on all occasions.



- Partner for more than 30 years
- **Quality image:** V&CO eco-designed embossed bottle
- **Characteristics:** A powerful wine with an intense nose of black fruit, undergrowth, vanilla and pepper. A well structured, expressive and balanced mouth.

2019



2021



Domaine de la DAUMACE

The beautiful wine estate « Daumace » is spread over 6 hectares and is situated at the foot of the Dentelles de Montmirail.

This family owned vineyard surrounds an ancient silkworm farm which was built in the 18th century.

The vineyard is composed of 75% of Grenache. This varietal, king of the Rhone Valley, seduces by the smoothness of its character and by its generosity.

- Family estate
- Grenaches over 50 years old
- Refined design
- **Characteristics:** A very seductive fruity and floral Beaumes de Venise. An ample, round, generous and fluid palate, with very fine tannins.



CLAUDE MEFFRE





DOMAINE DE BLACIEUX

The Domaine de Blacieux is a family estate of 18 hectares situated in abrupt terraces which is now managed by two brothers.

Nature is at the heart of everything at this estate. They combine management of the vineyard with mixed crop production and stock farming. The brothers make their own compost to grow the vines. There is a single principle behind this exceptional terroir: respect for nature.



- Northern Cru
- Sustainable agriculture
- **Quality image:** V&CO eco-designed embossed bottle
- **Characteristics:** Intense nose of blackcurrant and raspberry. Soft and smooth mouth.

2021



DOMAINE DAME GUILHERME

Located in the heart of the Côtes du Rhône [near Rasteau and Cairanne] this family business has been in the Gabriel Meffre Family since 1955 ; now run by his grandson, Hugh Meffre and his daughter Aurélie.

This Estate, formerly owned by the Prebayon Abbey, owes its name to Dame Guilherme who was the last Abbess of Prebayon.

In the Middle Ages, when crossing this vast, bandit-infested "forest "of scrubland, your life was in danger. All you could do was commit your soul to God. This is probably the origin of the name Plan de Dieu (God's Plain).

- Sustainable agriculture
- Distinctive label
- **Characteristics:** Intense nose of black fruit and ripe red fruit. Distinguished and harmonious palate with a remarkable balance thanks to the tannic structure.



AURELIE MEFFRE



Domaine VILLESÈCHE

Nestled between the Cevennes and Provence in the centre of the beautiful hamlet of Pognadoresse ; Domaine Villesèche is a family Estate, going back 3 generations.

Here the generations are working together to create a powerful and elegant wine.

- Historical partner for over 25 years.
- Family estate.
- Sustainable agriculture
- **Quality image:** V&CO eco-designed embossed bottle
- **Red:** Elegant nose of fresh fruit and of undergrowth enhanced by spices. Soft and harmonious mouthfeel and skilly tannins
- **Rosé:** Vivid nose of English candy and small red fruit. Crispy, fresh and remarkably fruity mouth
- **White:** Subtle nose mixing flowers and fruit. Uncutuous and tonic mouth with a beautiful length



Domaine VILLESSÈCHE

Nestled between the Cevennes and Provence in the centre of the beautiful hamlet of Pognadoresse ; Domaine Villessèche is a family Estate, going back 3 generations.

Here the generations are working together to create a powerful and elegant wine.

- Historical partner for over 25 years.
- Family estate.
- Sustainable agriculture
- Young AOP : 2013
- **Red:** Charming, generous and crunchy wine. A fruit wine that offers spontaneous pleasure. (Guide Hachette)
- **White:** Gourmand and fruity nose. Freshness and delicate palate with a saline ounce expressing the minerality of the terroir



RED
2020



LES FRÈRES VILLESSÈCHE



CHATEAU DES Sources

Château des Sources is our own-estate (55ha). The estate is situated in Bellegarde (southern France) on the eastern side of the Costières de Nîmes. The property located in a beautiful park (5ha) benefits from 3 water springs which continuously feed several lakes in the surroundings.

- Sustainable agriculture
- **Red:** Smooth and pleasant mouthfeel of spices, berries and thyme on lovely fine tannins
- **White:** Fresh and vibrant white wine. Medium body with a lemony character. Vivid and well-balanced with a dense final. (James Suckling)



2020	WHITE 2020	2022
		

Château des SOURCES

- Sustainable agriculture
- **Quality image:** V&CO eco-designed embossed bottle
- Annually awarded
- **Red:** Generous and round with garrigue notes in finish.
- **Rosé:** Fruity and fresh nose. Fresh and soft mouthfeel
- **White:** Nose of white flowers. A fresh and fruity attack of pear. Nice tangy persistence in the mouth. Pleasant final



RED

2021	2021	2022	2022





V&CO

LE PETIT COCHONNET

THE BEST PART

DOWNLOAD THE APP AND DISCOVER OUR LABEL IN AUGMENTED REALITY



Flash the QR code to see the animation



LE PETIT COCHONNET

THE BEST PART

AUGMENTED REALITY



1: DOWNLOAD THE APP SMART-BOTTLE ON ANDROID OR IOS



2: OPEN THE APPLICATION AND SCAN THE LABEL



3: CHOOSE THE WINE COLOR



4: DISCOVER THE WINE PROFILE



IT IS RIGHT "EVERY PART IS THE BEST PART" ! HERE IS THE PIG'S BEST PERFORMANCE. A POWERFUL WINE WITH GOURMAND STRUCTURE WHICH WILL LEAD YOU DIRECTLY TO SUCCESS !

LE PETIT COCHONNET A STORY OF PUN !



- **VARIETAL WINES** : French emblematic grape varieties.
- **FUN LABELS** : Each Petit Cochonnet expresses grape variety's personality.
- **MILLENNIALS & NEOPHYTE CONSUMERS** : Fun and festive tasting moments.

BIB CUBIQUE



LE PETIT COCHONNET

Le Petit Cochonnet is the gourmet friend...

A natural approach to the wine to quite simply highlight fruit and freshness. Don't make a pig of it and don't be fooled by its rustic character.

Le Petit Cochonnet... A story of pun !

LE PETIT COCHONNET

World Cup Edition



LE PETIT COCHONNET

These two concepts were created in limited edition.

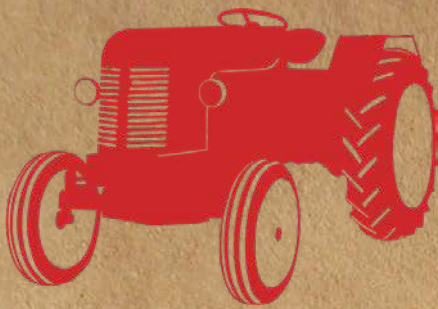
At the occasion of the FIFA World Cup in 2022, We made our red Vin de France.

For the Olympic games 2024, we produce three new wines.

Cabernet-Sauvignon (IGP OC) : a red wine with a strong character, sweet and silky tannins. With numerous fruity aroma like red fruits and a stouch of bay leaf.

Gewurztraminer/Muscat (IGP OC): a festive sweet wine with expressive and delicious aroma, like citrus fruits, honey and lychee.

Chardonnay (IGP OC): a gourmand wine worked with the fruit (citrus, peach) whose will wrap you up with softness.



WINES WITH POWER UNDER THE WOOD !

PETIT TRACTEUR

by V&CO

These wines represent southern French art of living.

Petit tracteur will revive your memories of our countryside's landscapes.

World of aromas and flavours...



BIB 3L



POUCH 1.5L



CANETTE 250ml





COTES DU RHONE ROSE
A lazy Petit Tracteur !

Take it easy !
Petit tracteur «entertainment»
edition will bring you in our southern
atmosphere.
Its fruity character will lead you
to moments of relaxation sitting
in the shade.
Enjoy it !



COTES DU RHONE RED
A strong Petit Tracteur !

Brace yourself. Petit tracteur
«monster truck» edition will make
you discover reliefs and specificities
of our southern landscapes.

Its fruity and spicy character will
drive you to intense emotions.



COTES DU RHONE WHITE
A tonic Petit Tracteur !

Fasten your seatbelt. Petit tracteur
«sport» edition gets you around
southern Rhône Valley roads.

The quality of its engine will en-
sure you a good trip.

VOITURETTE

Wines with power under the hood!

In all occasions, whatever the place you are Voiturette will guide you to the discovery of France's legendary grape varieties!

- French Lifestyle: design that uses a symbolic French car
- Highly visible design



6 OR 12 UNITS
CASE



CARTE
DES ROUTES NATIONALES
DE LA FRANCE

DRESSÉE EN 1824

et rectifiée en 1848

au Dépôt des Cartes et Plans

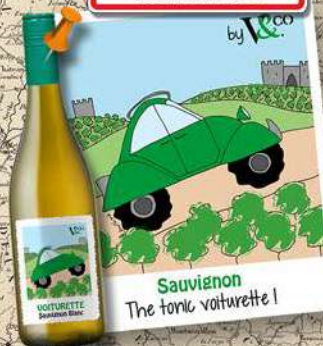
du Ministère des Travaux Publics

Signes Conventionnels.

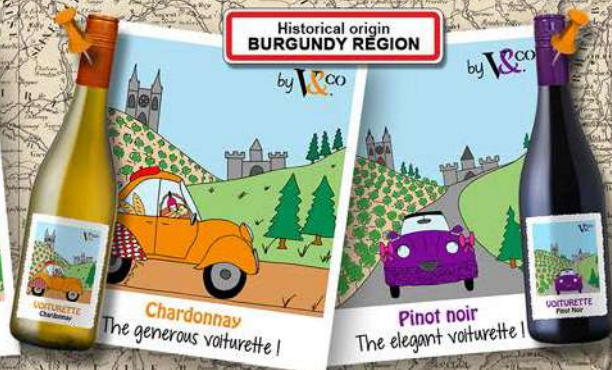
- VILLE CHÈF-LIEU DE PRÉFECTURE
- VILLE CHÈF-LIEU DE SOUS-PRÉFECTURE
- Abb. Abb.
- Village Village
- Mairie

Limites communes de France de 1824

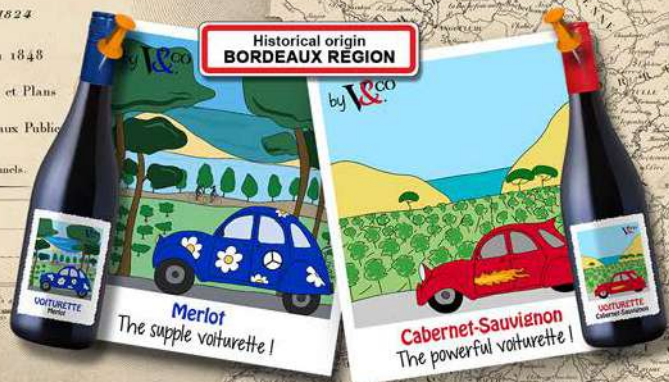
Historical origin
LOIRE REGION



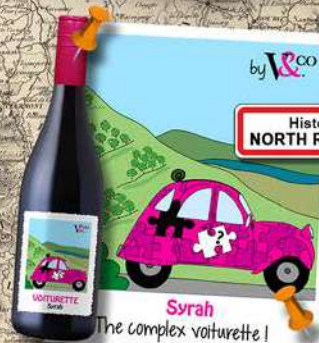
Historical origin
BURGUNDY REGION



Historical origin
BORDEAUX REGION



Historical origin
NORTH RHONE REGION



Historical origin
SOUTH RHONE REGION





Organic wines



- **Protecting the environment** is one of today's preoccupations for V&CO.
- In our Winery, we are all **actively engaged** to do what is necessary to preserve our environment.

Our ORGANIC wines



Wine critics 90+



CHÂTEAU DE LA
GRANDE GARDIOLE

LES GRANGES DES
PAPES

LES GRANGES DES
PAPES

LES SOURCES DE
MONTMIRAIL

BOIS DE MENGE

LES ROCHES DES
DENTELLES

RIVE DE MALVA

CHÂTEAUNEUF-DU-PAPE

GIGONDAS

VACQUEYRAS

SAINT JOSEPH

Wine critics 90+



DOMAINE SAINT
ALIMANT

RASTEAU



RESERVE DES
CHASTELLES

TAVEL



CHÂTEAU DES
SOURCES CUVÉE « S »

COSTIERE DE NÎMES



CHÂTEAU DES
SOURCES



LES COMBELLES

CÔTES DE RHÔNE VILLAGE



NOS ORIGINES

Formats

BOX 135 UNITS



PALLET



DECORATED CASE



OPEN CARDBOARD



MAGNUMS



VIGNOBLES & COMPAGNIE

engagés depuis 1963

19 Chemin Neuf
30210 CASTILLON-DU-GARD-FRANCE

Tel: 04 66 37 49 50

Fax: 04 66 37 49 51

www.vignoblescompagnie.com
service.export@vignoblescompagnie.com



www.facebook.com/vignoblescompagnie



[vignoblescompagnie_rhone](https://www.instagram.com/vignoblescompagnie_rhone)

